

2 X

X

1 X

1 X

push button marking

0

mark entrance

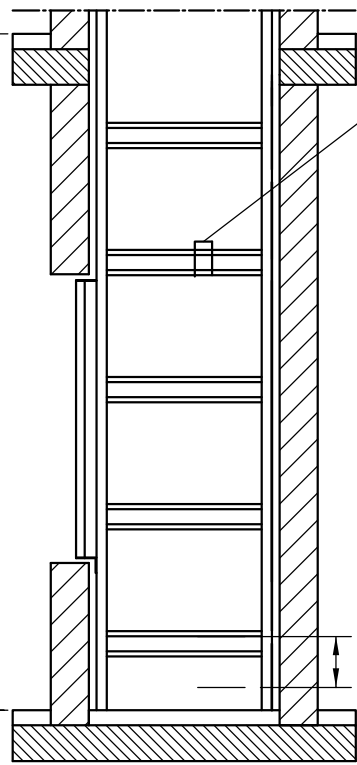
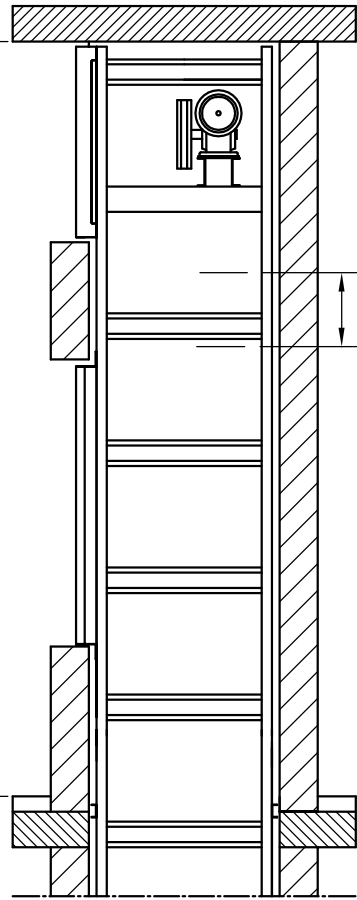
overall structure height = 8510

overall shaft height = 8520

HR min = SH + DH + 1360 ≤ 3000

2900

2620



Shaft height and depth are min. plumbed dimensions  
min floor to floor height = 2x $DH$  + 290 serving height at all levels and on same on same serving side  
Floor height are related from FFL to FFL

CO > 200

safety bar position at maintenance work

CO > 150

X

W

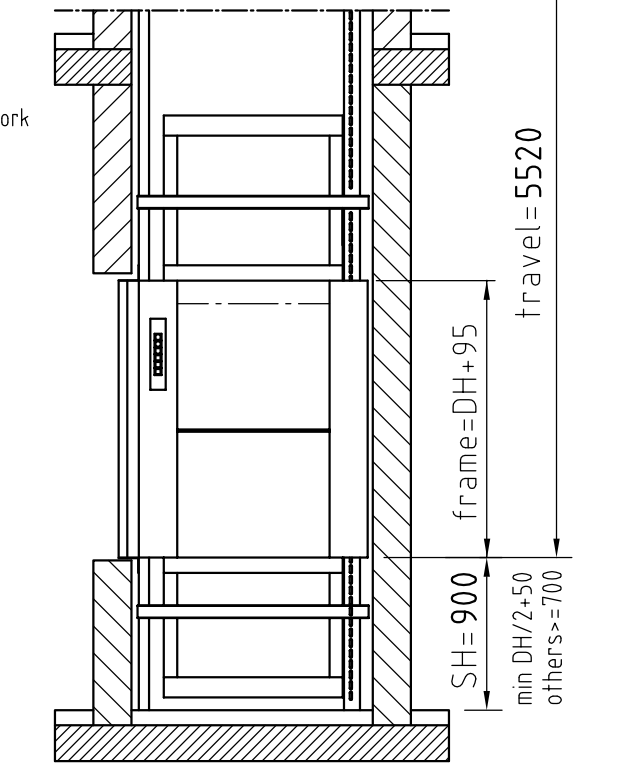
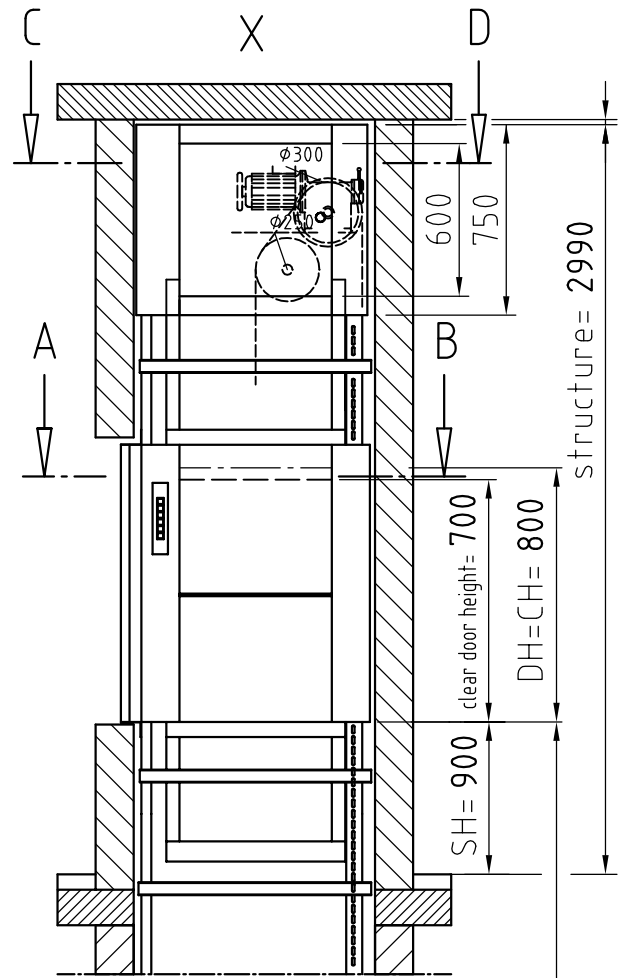
X

X

X

X

X



structure = 2990

floor: 0

clear door height = 700

DH = CH = 800

SH = 900

travel = 5520

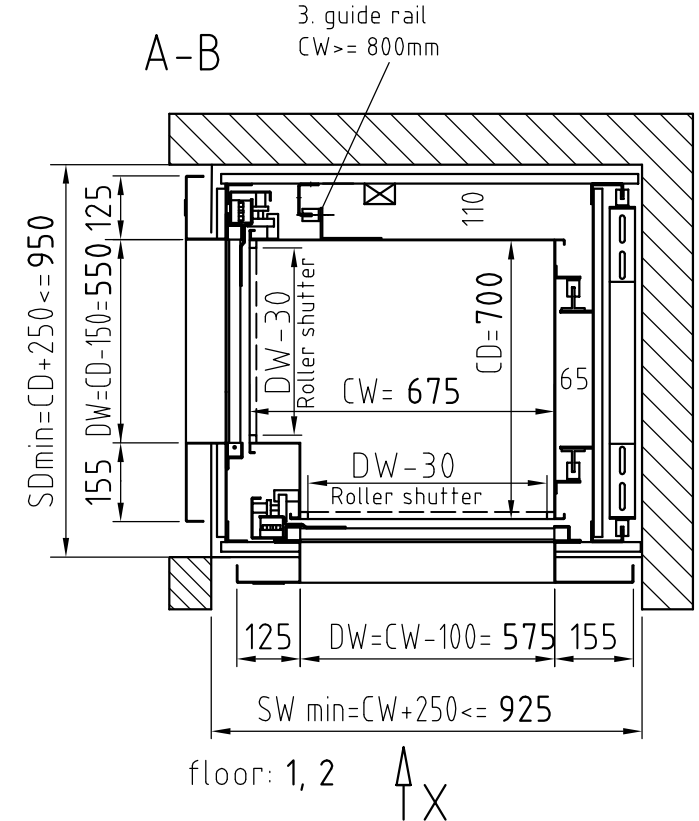
frame = DH + 95

SH = 900

min DH/2 + 50

others >= 700

W

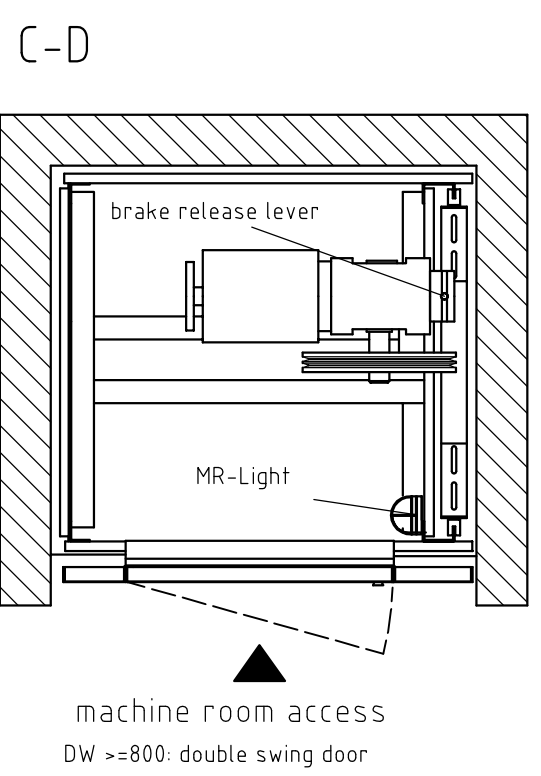


floor: 1, 2

3. guide rail CW >= 800mm

SD min = CD + 250 ≤ 950  
155 DW = CD - 150 = 550, 125  
DW - 30 Roller shutter  
CW = 675  
CD = 700  
65  
125 DW = CW - 100 = 575 155  
SW min = CW + 250 ≤ 925

- List of builders work
- Provide electrical supply to machine room  
- Motor 5x2,5 mm<sup>2</sup> fuse 16 A - light 3x1,5 mm<sup>2</sup> fuse 10 A  
3x400V 50Hz; AG 18.24; P= 0,4 kW; In= 1,84 A; Ia= 10,8 A  
3x400V 50Hz; BO 18.24; P= 0,55 kW; In= 1,6 A; Ia= 9,6 A  
3x400V 50Hz; RG 18.25; P= 0,68 kW; In= 2,4 A; Ia= 11 A
  - Machine room access by ladder
  - Shaft enclosure to fixed AFTER installation of lift.
  - Shaft enclosure and shaft ventilation to be in accordance with local authority requirements
  - Structure shall not carry buildings forces. Structure to be fixed to solidium
  - Safety bar to be fixed min. 1600mm over FFL for maintenance work
  - Temperature in MR room shall be between +5 ° to 40 ° constantly
  - Keep the machine room dry and clean
  - Unit shall be cleaned and maintained periodical
  - AFTER installation of lift all other jobs



machine room access  
DW >= 800: double swing door

increments 25 mm  
CW= car width 600(500) - 1000mm  
CD= car depth 500 - 1000mm  
CH= car height 600 - 800(1200)mm

DW= door width  
DH= door height  
SH= Serving height  
SW= Shaft width  
SD= Shaft depth  
HR= Headroom clear  
FFL= Finished floor level  
CO= overrun  
ATTENTION  
Cabin protection reduces clear entrance openings resp. shaft sizes  
Service lift code acc. to acknowledgement landing doors DIN 18090-92  
All dimensions in "mm", drawing w/o scale

<b>SKG ISO-A</b> Adjacent entrances w/o safety gear		<b>MRL ELEVATORS</b>	
Load limit: 100 kg	Car weight: 100 kg	Site: COOMERA	
Speed: 0,4 m/s	Counterweight: 150 kg	Buccaneer Way	
Stops: 3	Main rope: 2 rope $\phi$ 6 mm	Order-No.:	Country code
Entrance: 3	Drive: BO 18.24	SKG-No.: 188 848	<b>AUS</b>
Elec. Supply: 3x400V, 50Hz	Circuit diag.: 121e474aH3	Approved by	Date
Car: galvanized	Door: st/st 1.4016	Name Löwenberg	In.: B A09-0012
remarks MR-door st/st 1.4016, roller shutter st/st w. contact, marine packing	e .	Draw.-No.: 188848-1	
controller cabinet outside of shaft, emergency stop switches (pit + cabin top)	d .		
cover of handwinding wheel	c .		
TR-Tür Edelst. 1.4016, Rollade Edelst. m. Kontakt, seemäßige Verpackung	b .		
Schaltschrank außerhalb, Not-Aus-Taster (Grube+FK-Decke), Handradabdeckung	a .		
geschlossener Kabelkanal, Sonderseilflaschen Guß, Antriebskabel m. Schutzschlauch			
Steuerstromnotendschalter, Trennwand zwischen GG + FK verzinkt			
ohne Handlampe, mit TR-Beleuchtung			

Accessible space underneath shaft is not permitted